



MONTHLY MEMBERSHIP PROGRESS REPORT

District 5M 9

Results as of: 5/31/2017

GMT: Judy Hankom

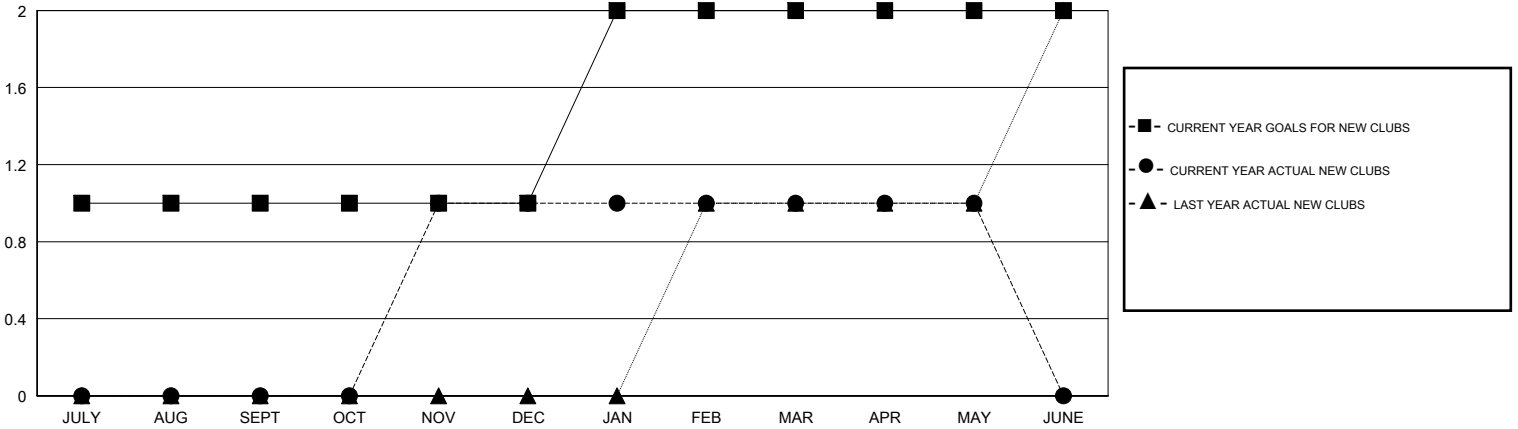
LOCATION MINNESOTA

GMT CA

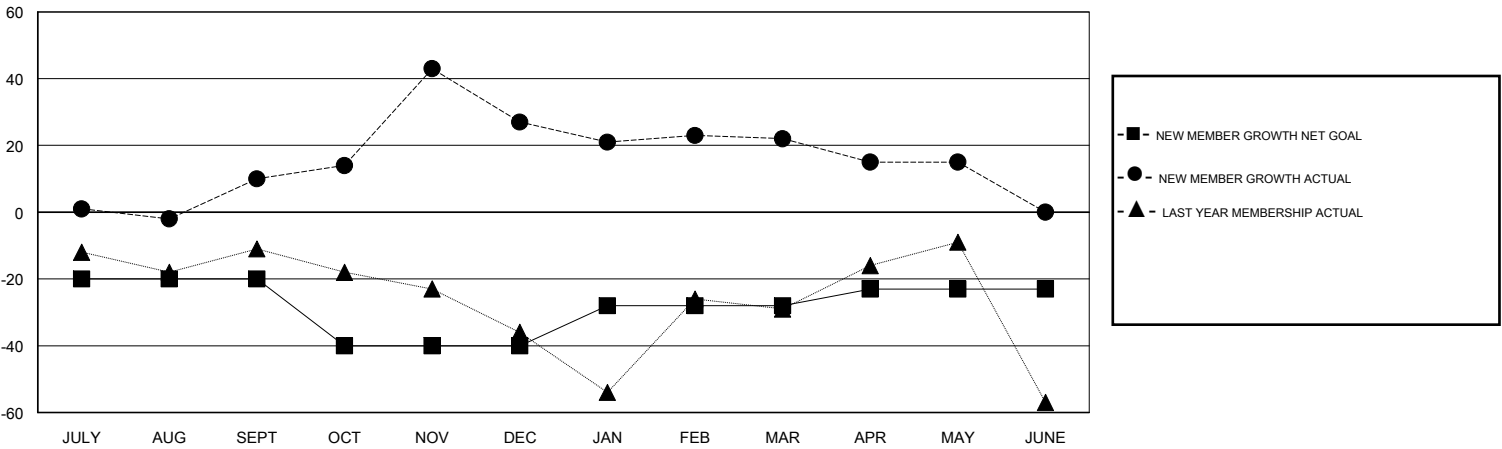
| Clubs | | | |
|-----------------------|---------------|-----------|---------------|
| RESULTS FOR 2016-2017 | | | |
| QUARTER | NEW CLUB GOAL | NEW CLUBS | DROPPED CLUBS |
| JULY/AUG/SEPT | 1 | 0 | 0 |
| OCT/NOV/DEC | 0 | 1 | 0 |
| JAN/FEB/MAR | 1 | 0 | 0 |
| APR/MAY/JUNE | 0 | 0 | 0 |

| Members | | | |
|-----------------------|--|--|--|
| RESULTS FOR 2016-2017 | | | |
| QUARTER | NEW MEMBER GROWTH NET GOAL (not reinstated or transfers) | NEW MEMBER GROWTH ACTUAL (not reinstated or transfers) | DROPPED MEMBERS ACTUAL (including transfers) |
| JULY/AUG/SEPT | -20 | 46 | 36 |
| OCT/NOV/DEC | -20 | 61 | 44 |
| JAN/FEB/MAR | 12 | 36 | 41 |
| APR/MAY/JUNE | 5 | 21 | 28 |

GOALS AND ACTUAL NEW CLUBS CUMULATIVE



GOALS AND ACTUAL MEMBERS CUMULATIVE



| | | |
|------------------|---|----------------------------|
| DROPPED CLUBS: 0 | 46 CLUBS OF 67 ADDED 1 OR MORE NEW MEMBERS | GENDER DISTRIBUTION |
| DROPPED MEMBERS | CLICK HERE FOR CUMULATIVE MEMBERSHIP DATA | MALE 1,477 (64.02%) |
| DECEASED 25 | | FEMALE 830 (35.98%) |
| CLUB CANCELLED 0 | TOTAL FAMILY UNIT MEMBERS 763 | |
| OTHER 124 | FAMILY MEMBERS PAYING HALF DUES 384 | |
| TOTAL 149 | | |